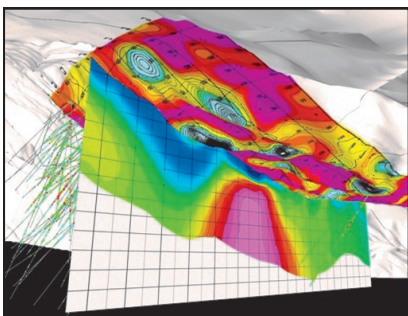


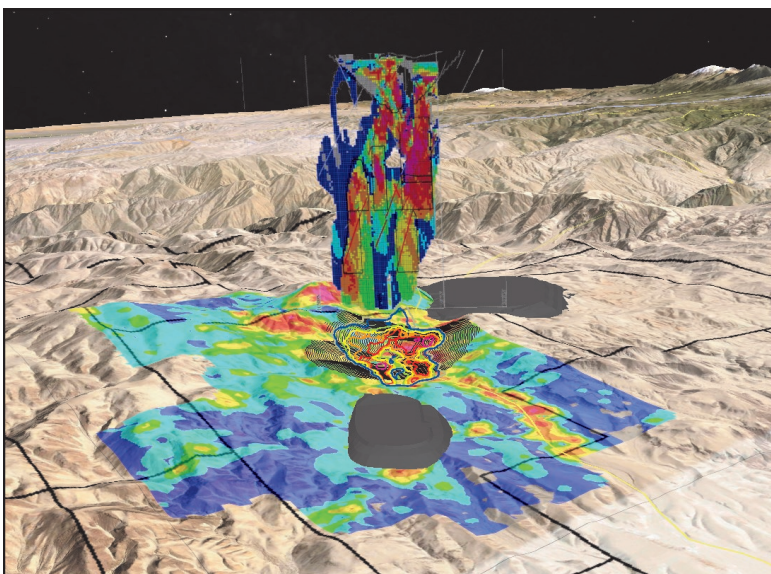
Google Earth is a free software program that lets you fly anywhere on Earth to view satellite imagery, maps, terrain and 3D buildings. When used in conjunction with Surpac, it becomes a very powerful 3D GIS tool that can be used for storing, displaying and printing all of your exploration and mining data.

Any data created in Surpac can be exported to Google Earth including string



point data, string line data and string polygon data, all DTM's and 3DM models as well as saved screen images. Any other images taken from PDF's for example can be imported to Surpac and geo-referenced and then ex-

ported to Google Earth. High quality images can be saved from Google Earth and imported into Surpac for geo-referencing as well as any KML data files.



SGET Functions Include:

- Point, Line, Polygon Strings to GE
- DTM's and 3DM's to GE
- Surpac screen images to GE
- Import images from GE to Surpac
- Create grids lines for GE
- Import KML files to Surpac
- Section data and images to GE
- Block model grade-thickness plots
- Sketchup files to GE and Surpac
- Local-UTM-LL grid conversions



GEO WIZ Consulting
PO Box 387
Collaroy N.S.W 2097
AUSTRALIA
ross@geowiz.com.au

The SGET system comes with 8 detailed tutorials and associated data that can be incorporated into a 2 day on-site training course:

- 1 - EXPORTING SURPAC STRING DATA TO GOOGLE EARTH
- 2 - EXPORTING SURPAC DTM-3DM DATA TO GOOGLE EARTH
- 3 - EXPORTING IMAGES FROM SURPAC TO GOOGLE EARTH
- 4 - IMPORTING IMAGES INTO SURPAC
- 5 - DRILL HOLE MANIPULATION IN SURPAC AND GOOGLE EARTH
- 6 - DIGITISING IN GOOGLE EARTH AND EXPORTING TO SURPAC
- 7 - 3D DATA INTO GOOGLE EARTH
- 8 - MISCELLANEOUS SGET FUNCTIONS

